

1193306 / 12 / 18

Description

Housing - Die cast aluminium powder coated with choice of RAL colors, radiation protection, UV with high mechanical resistance.

Diffuser - PMMA diffuser, UV stabilized with a better light output.

Mounting - LED Recessed mounted.

Standards - Manufactured in accordance with IEC 62722.

LED - Energy saving consumption and Durability. Efficiency and quality in wide variation. 50,000 Hrs Life span under temperature (-20°C to 55°C).

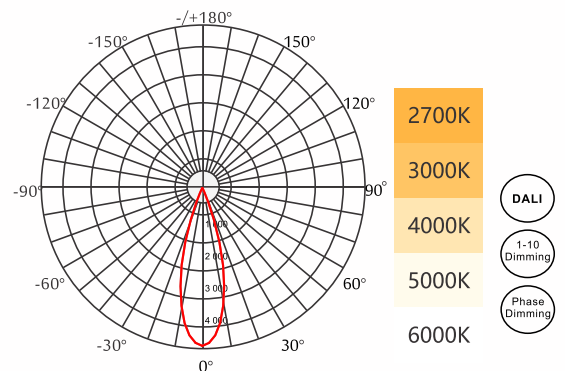
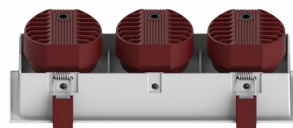
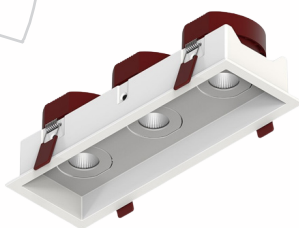
Objective

This luminaire is a good choice in matter of design and power. This high efficiency of the LED source ensures excellent performances and low consumptions. Energy and economy savings are a little advantage compared to the design of this item. Completely dustproof. Protected against splash of water.

Obiettivo

Questo apparecchio è una buona scelta in termini di design e potenza. Questa elevata efficienza della sorgente LED garantisce prestazioni eccellenti e bassi consumi. Risparmio energetico ed economico sono un piccolo vantaggio rispetto al design di questo prodotto. Completamente antipolvere. Protetto contro gli spruzzi d'acqua.

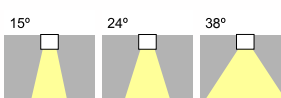
CODE	POWER	CHIP	IP	LUMENS	DIMENSION
1193306	3*6W	COB	54	95 lm/W	212 x 72 x H62mm ☯ 200 x 60mm
1193312	3*12W	COB	54	95 lm/W	253 x 88 x H71mm ☯ 240 x 75mm
1193318	3*18W	COB	54	95 lm/W	312 x 102 x H86mm ☯ 300 x 90mm



Color Options



Beam Angle



CRI >90 -20° C 55° C 85~265V 50/60Hz